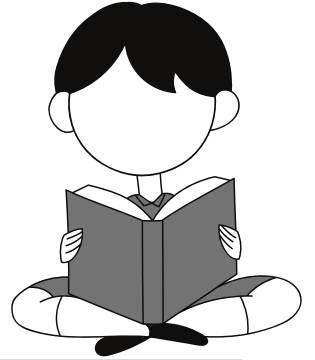


# Spot the Letters

Look at the letter on the left and circle the same letters on the row.



a

a

o

a

d

b

e

b

d

b

k

b

k

k

c

j

e

v

c

e

c

d

d

a

d

d

c

e

e

o

e

n

e

f

l

f

g

h

f

k

f

q

g

x

g

z

z

s

g

# Spot the Letters

Look at the letter on the left and circle the same letters on the row.



i

a i a i b i

j

h j j b k j

k

t k v c u k

l

l g l d r e

m

o m n m f i

n

g f f n f q

o

o g o p s o

# Spot the Letters

Look at the letter on the left and circle the same letters on the row.



p

p

i

a

p

o

i

q

h

q

q

b

h

n

r

r

k

r

c

d

k

s

l

s

s

d

s

v

t

o

t

n

t

f

i

u

g

u

f

n

f

u

v

o

v

o

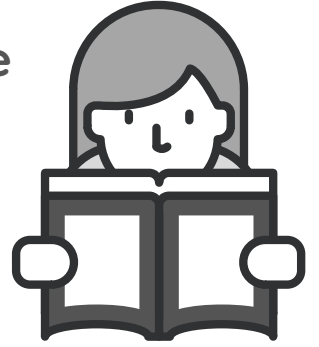
v

s

o

# Spot the Letters

Look at the letter on the left and circle the same letters on the row.



w

p

w

a

w

p

i

x

h

x

q

b

x

m

y

y

k

y

c

d

y

z

l

z

z

d

z

v

a

o

t

n

t

f

i

b

g

u

f

n

f

u

c

o

v

o

v

s

o

# Spot the Letters

Look at the letter on the left and circle the same letters on the row.



b

b

o

c

d

b

e

k

d

m

k

l

k

k

e

j

e

v

m

e

k

c

c

a

c

d

c

e

o

o

m

n

o

f

l

q

g

h

i

k

p

q

z

x

w

z

z

s

q

# Spot the Letters

Look at the letter on the left and circle the same letters on the row.



d

b

d

c

d

b

e

m

d

m

k

m

k

m

j

j

e

v

j

e

h

a

b

a

a

d

c

v

f

g

f

n

y

f

l

l

g

m

l

k

p

q

p

p

n

z

z

p

q

# Spot the Letters

Look at the letter on the left and circle the same letters on the row.



g

b

g

c

g

b

e

t

d

t

k

x

t

m

x

x

h

x

x

e

k

s

s

c

b

s

c

l

w

g

w

h

y

w

l

i

i

n

l

m

i

q

u

z

n

u

u

p

u

# Spot the Letters

Look at the letter on the left and circle the same letters on the row.



y

b

r

c

y

b

y

n

n

m

n

m

k

m

r

j

r

v

j

r

r

s

p

s

a

s

c

k

v

b

v

v

y

o

l

z

h

z

l

t

p

z

u

u

y

u

z

u

q



# Find the Same Letters

Draw a circle around all the letter A's you see.



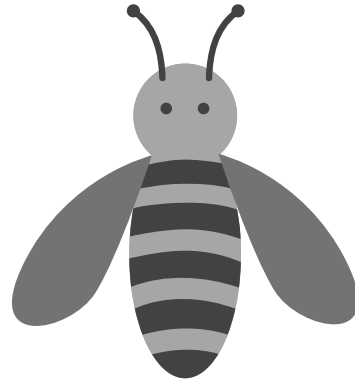
A r k A R z o S m b  
K n L A C k T k E a S  
a A K A z H a j n q  
N d L S N k A k i a U  
C K o E N A f w b u G

# Find the Same Letters

Draw a circle around all the letter B's you see.

Bb

is for bee



B r k A R z b S m b  
K n L A C k T k B a B  
a B K A z H b j n q  
N d L S B k A k i a U  
C K o E N B f w b B G

# Find the Same Letters

Draw a circle around all the letter C's you see.



c r k A R z c S m b  
K n L A C k T c B c B  
a B K C z H C j n q  
N d L S C k A k i a C  
C K c E N B f w b B G

# Find the Same Letters

Draw a circle around all the letter D's you see.



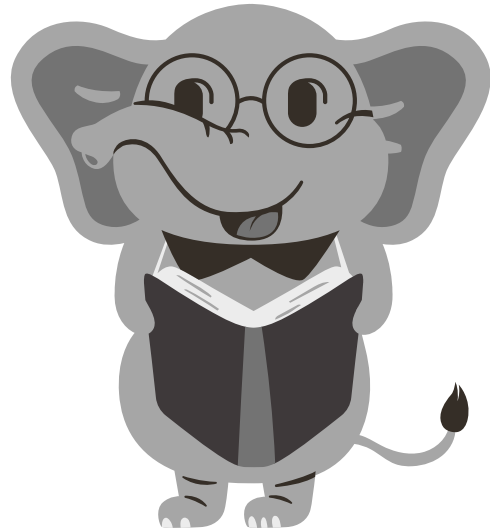
**D** r k D R d c s m b  
K n L A C k T c D c B  
a B K C d H C j d q  
N d D s C k A d i a C  
C K c E N B f d b B G

# Find the Same Letters

Draw a circle around all the letter E's you see.

Ee

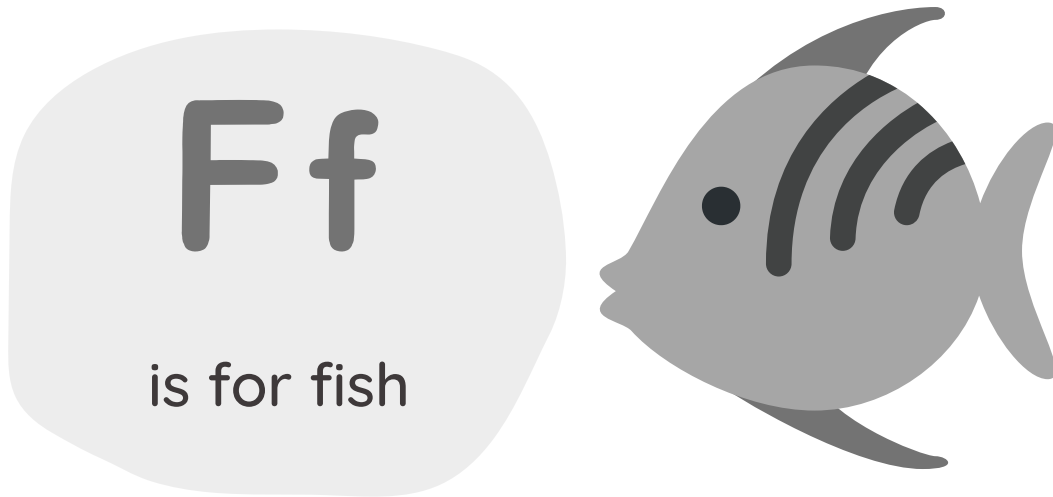
is for elephant



E r k D R d c E m b  
K n L E C k E c D c B  
e B K E d H C e d e  
N d E s C k A e i a C  
C K c E N B f d b E G

# Find the Same Letters

Draw a circle around all the letter F's you see.



**F** r k D R d c E f b  
K n L E **F** k E c D c **B**  
e **B** F F d H **C** e d e  
N d **E** s C f A e i a **F**  
C **K** c F N **B** f f b E G

# Find the Same Letters

Draw a circle around all the letter G's you see.

Gg

is for goat



G r k D R g c E f b  
K n L E F k E c G c B  
g B F F d G C e d g  
N g E S C f A e i g F  
C K c F N G f f b E G

# Find the Same Letters

Draw a circle around all the letter H's you see.

Hh

is for hedgehog

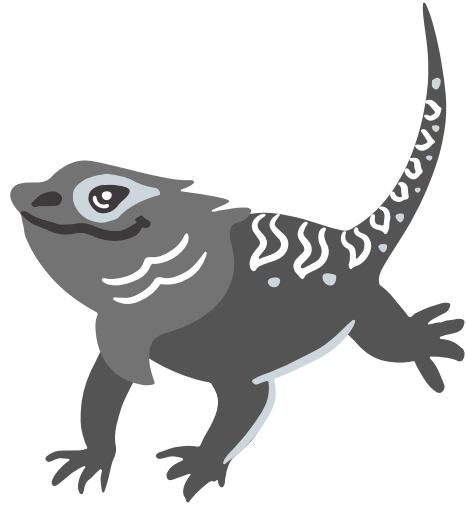


H r k D R g c E f b  
K n L E H k E c G c B  
g B F F d H C e h g  
N h E H C f A e i g F  
C K c F N G f h b E H



# Find the Same Letters

Draw a circle around all the letter l's you see.



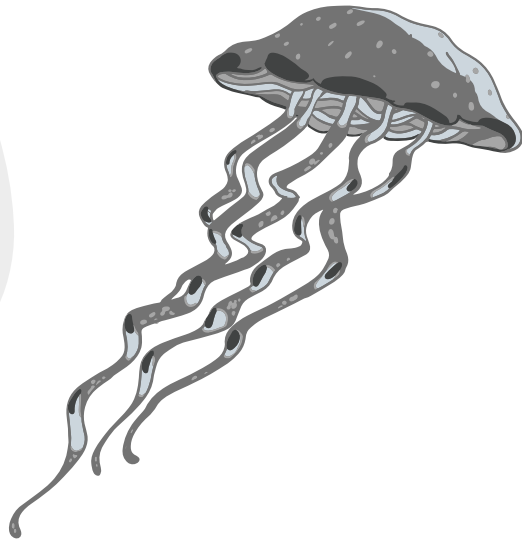
l r k D R g c E f b  
K n L E l k E c G l B  
g B F F i H C e l g  
N h l H C f l e i g F  
C K i F l G f h b E l

# Find the Same Letters

Draw a circle around all the letter J's you see.

Jj

is for jellyfish



J r k D J g c E j b  
K n L E l k J c G l B  
g B F F j H J e j g  
N h J H C f l e i g F  
C K i F l G f j b E l

# Find the Same Letters

Draw a circle around all the letter K's you see.

Kk

is for koala



K r K D J g K E j b  
K n L E I k J c G I K  
g B F F k H J e k g  
N h K H C f l e k g F  
C K i F I K f j b E I

# Find the Same Letters

Draw a circle around all the letter L's you see.



L r k D J l k E p b  
K n L E l k J c G l K  
g B F F k L J e k g  
N l K L C f l e k g F  
C K i F l K f j b E l

# Find the Same Letters

Draw a circle around all the letter M's you see.



M r k D M l k M p b  
k m L E l k j M G l K  
g B F F m L J e k g  
N l M L C f l e m g F  
C K i F m K f j b E l

# Find the Same Letters

Draw a circle around all the letter N's you see.

Nn

is for nest



N r k D M l N M p b  
k m L E l n j M G n K  
g B F F m L N e k n  
N l N L C f l e n g F  
C K i N m K f j b N l

# Find the Same Letters

Draw a circle around all the letter O's you see.



O r k D M l N o p b  
K m L E O n J M G o K  
g B F F o L N e o n  
N l O L C f l e n g O  
C K i N o K f o b N l

# Find the Same Letters

Draw a circle around all the letter P's you see.



P r k D M l N O p b  
K m L P O p J M G p K  
g B P F o L N e o p  
N l O L P f l p n g O  
P K i N o P f o b N l



# Find the Same Letters

Draw a circle around all the letter Q's you see.



Q r k D M l N O q b

K m L P O q J M G p K

g B P Q o L T e o p

N l O Q P f l p q g P

U K i N o P q q b N l

# Find the Same Letters

Draw a circle around all the letter R's you see.

Rr

is for racoon



R r k d m i n R r b  
k m L R U q j m g p R  
g R p q r l l r o p  
N i O q p r i r q g O  
Y K i R o P q q b R i

# Find the Same Letters

Draw a circle around all the letter S's you see.

Ss

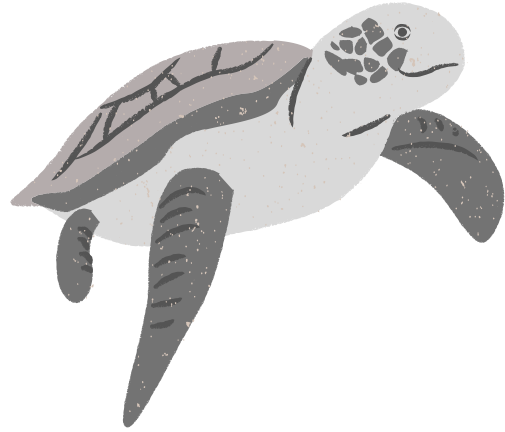
is for scorpion



S r k D M l N R r s  
k m L R S q j S G p R  
g R S Q r L H s o p  
N l O Q P S l r q g S  
l S i R o P q q s R l

# Find the Same Letters

Draw a circle around all the letter T's you see.



T r k d M l N R t s  
k m L R T q j T G p R  
g G T Q r L H s t p  
N l W Q T S l r t g S  
l S i T o G q q s R l

# Find the Same Letters

Draw a circle around all the letter U's you see.



U r k d M i N R u s

k m L R U q j T G u R

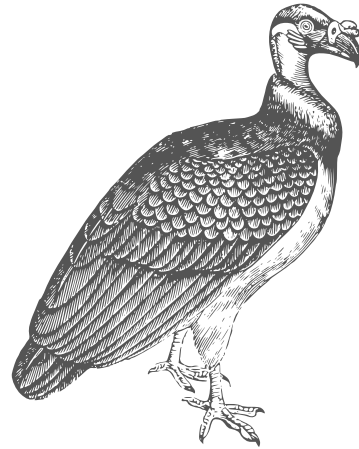
g G u q r L H s t p

U l W z U s l r u g U

l S i T o G q u s R l

# Find the Same Letters

Draw a circle around all the letter V's you see.



V r k D M I N R V s

k m L R V q J T G u R

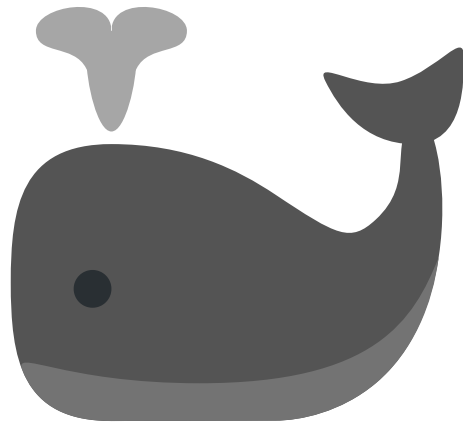
g G v Q r L H v t p

U I V z v S I r u v U

I S v T o G v u v R I

# Find the Same Letters

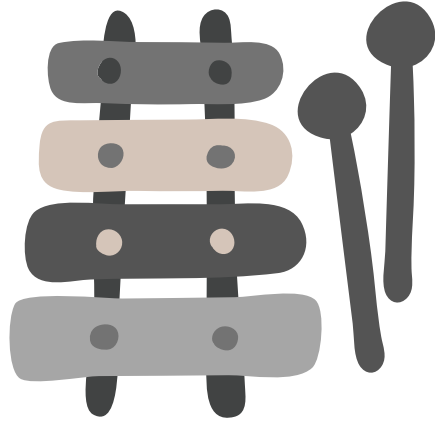
Draw a circle around all the letter W's you see.



W r k D M I N R V w  
K m L R V W J T G w R  
g G v w r L H v t p  
U w W Z V S I w u v U  
I S v T o W v u v R I

# Find the Same Letters

Draw a circle around all the letter X's you see.



x r k d M i N R X w  
k m L R X w J T G w R  
g X v w r L H v x p  
X r W Z V S x w u v U  
X S v T o X v u x R i



# Find the Same Letters

Draw a circle around all the letter Y's you see.



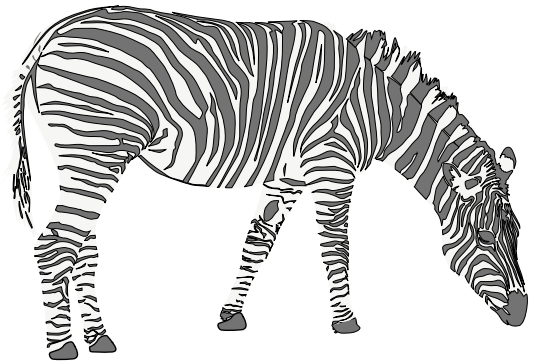
Y r k d M i n R Y w  
k m L Y X w j Y g w R  
g X v w y L H v y p  
x r Y z v S y w u v U  
Y S v T y X v u y R i

# Find the Same Letters

Draw a circle around all the letter Z's you see.

Zz

is for zebra



z r k d m i n r z w  
k t Z y X w z y g w R  
z X v w y z H v z p  
x r Y z v s y w u v U  
Y S v z y X v z y R i